

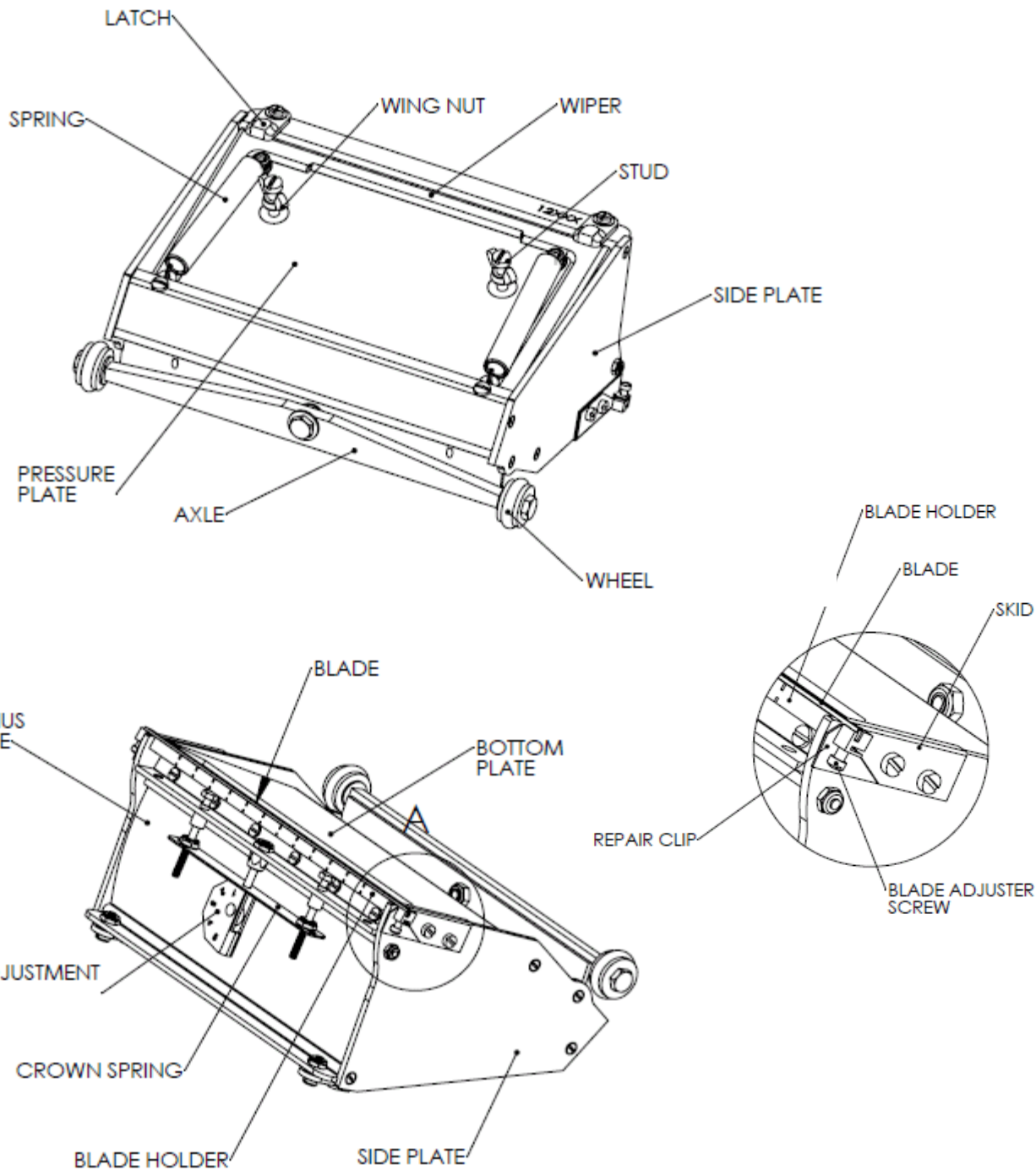


ASGARD

Classic and MAXXBOX® Finishing Boxes Operation and Maintenance Guide

1327 Northbrook Parkway, Suite 400
Suwanee, GA 30024
1-800-426-6256 | 678-892-2321

Models: EZ07-AD, EZ10-AD, EZ12-AD, EHC07-AD, EHC10-AD, EHC12-AD





ASGARD Standard and MAXXBOX® Finishing Boxes

Operation and Maintenance Guide

1327 Northbrook Parkway, Suite 400
Suwanee, GA 30024
1-800-426-6256 | 678-892-2321

Models: EZ07-AD, EZ10-AD, EZ12-AD, EHC07-AD, EHC10-AD, EHC12-AD

Operation

The Standard and MAXXBOX® finishing boxes apply joint compound over taped joints. Each style is available in three widths, generally used for finishing as follows:

- 7" (175 mm): applies bed coat
- 10" (250 mm): applies bed coat or finish coat
- 12" (300 mm): applies finish coat or skim coat

These tools require little effort to operate and are designed to produce uniform results every time. Both styles operate in the same manner. The difference in the two styles is the capacity of joint compound. The MAXXBOX® finishing boxes hold up to two times the amount of usable joint compound compared to the Standard finishing boxes.

The finishing boxes are controlled by a finishing box handle. Finishing box handles are available in different lengths, including extendable versions. The handle is attached to the finishing box by sliding the box onto the flange of the handle and tightening the two wing nuts.

Fill the finishing box through the opening behind the blade using the Loading Pump and the slot adapter inserted into the filler adapter.

The metal blade trowels the compound with the precise crown needed. This is set using the crown adjustment dial. This dial controls the amount of crown left on the joint with #1 being the most amount of crown (more joint compound applied) and #5 the least (less joint compound applied).

To position the finishing box on the joint to be covered, lock the finishing box at a slight angle (approximately 30%) by squeezing the brake grip on the handle with one hand. Your other hand should grip the handle near the box. The tool is always run with the wheels leading and the blade trailing. The handle should lead the box, except at the end of joints.

Place the wheels of the box on the surface, then release the brake grip and press the blade against the surface simultaneously, beginning to move the finishing box along the joint. Approximately two-thirds of the way along the joint, squeeze the brake grip again and sweep the finishing box off the surface. It is suggested that you begin to sweep the wheels off the wall about 6" (150 mm) before the intended stopping point to keep excess compound from flowing onto the outside of the box.

Reverse hand positions and start at the opposite end of the joint from where you began. Repeat the process of placing the finishing box on the surface and sweep off when you overlap the first pass of joint compound. This procedure is followed for all ceiling joints and horizontal wall joints.



ASGARD

Standard and MAXXBOX® Finishing Boxes

Operation and Maintenance Guide

1327 Northbrook Parkway, Suite 400
Suwanee, GA 30024
1-800-426-6256 | 678-892-2321

Operation (continued)

To cover vertical wall joints, lock the handle and begin covering the joint from the bottom up to a height of about 30" (.75 m), sweep off and begin again at the top of the joint. Move down the joint until you reach the previous stopping point. Then lock the handle and sweep off the surface, neatly joining the two finished sections.

For door or window openings, always work from the corner, moving toward the opening. Just before the wheels reach the opening, lock the handle and lift the wheels to keep them from dropping into the opening, then sweep away from the wall.

Before starting the finish coat, lightly sand the dried topping coat to remove any small crumbs. Fill the 10" or 12" (250-300 mm) box and set the dial to #3 for a medium crown. Apply a finish coat to all joints. For butt joints, apply a coat on either side of the center of the joint. After the two side by side coats have dried, finish them with a 10" or 12" (250-300mm) skim coat over the center of the joint.

Reset the crown dial to #5 for a tight crown then cover the joints on the ceilings and walls.

Maintenance

To open the boxes for cleaning, simply turn the two latches on the back and pull open. Clean thoroughly with a brush and water (or a water hose) to remove all joint compound from the tool. Then, after the tool is clean, lightly oil with TapeTech® Bazooka® Oil or any light machine oil.

Box Blade Replacement

1. To remove the used blade, place the tip of a screwdriver against one end of the blade and tap the screwdriver with the palm of your hand.
2. If the blade does not pop out, tighten the screw at one end of the brass blade holder, forcing the end of the blade out. Back the screw up and again tap the end of the blade.
3. Use one end of the used blade to clean any dried compound from the blade holder slot.
4. Remove both right and left skids, but leave the repair clips in place.
5. Slightly bend the new blade approximately 2 inches from both ends. This will help secure the blade while the tool is in use.
6. Start at one end, pressing the blade all the way into the blade holder, working to the other end. Install new skids. The "dog ear" on the skids should press against the back side of the new blade and be flush with the blade holder (about the thickness of a thumbnail lower than the blade edge).

Common Wear Parts

7" (175mm) Stainless Steel Blade: 200001
10" (250mm) Stainless Steel Blade: 250001
12" (300mm) Stainless Steel Blade: 300001

Skid Cover (Right): 209006
Skid Cover (Left): 209039